

## Rab5-GTP

**Catalog Number:** 26911

**Gene Symbol:** RAB5

**Description:** Anti-Rab5-GTP Mouse Monoclonal Antibody

**Background:** Rab5 is a member of Rab-family GTPases. Rab5 is a rate-limiting component of the machinery regulating the kinetics of membrane traffic in the early endocytic pathway.

**Immunogen:** Recombinant full-length protein of active Rab5A

**Tested Applications:** IP, IHC

**Recommended Dilutions:**

IP: 1 µg for ~2 mg total cellular proteins

IHC: 1:50-1:250

**Concentration:** 1 mg/ml

**Host:** Mouse

**Clonality:** Monoclonal

**Isotype:** IgG

**Purity:** Purified from ascites

**Format:** Liquid

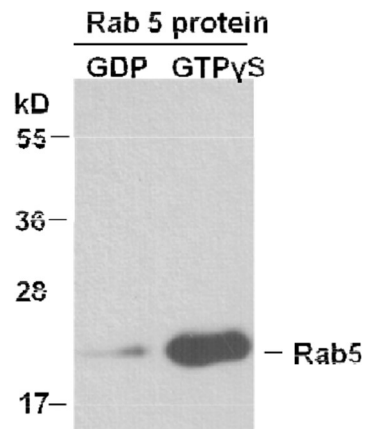
**Preservative:** No

**Constituents:** PBS (without  $Mg^{2+}$  and  $Ca^{2+}$ ), pH7.4, 150 mM NaCl, 50% glycerol

**Species Reactivity:** Anti-Rab5-GTP antibody recognizes active Rab5 proteins of vertebrates

**Storage Conditions:** Store at -20°C. Avoid repeated freezing and thawing

### Immunoprecipitation/Western blot:



**IP:** anti-active Rab5 mAb  
**WB:** anti-Rab5 pAb

### Rab5 Activation Assay.

Purified full-length Rab5A proteins were immunoprecipitated after treated with GDP (lane 1) or GTP $\gamma$ S (lane 2).

Immunoprecipitation was done with the anti-Rab5-GTP monoclonal antibody (Cat. No. 26911). Immunoblot was with anti-Rab5 polyclonal antibody (Cat. No. 21151).

FOR RESEARCH USE ONLY. NOT FOR DIAGNOSTIC APPLICATIONS